



GMT Constitutional Area 1, Group B

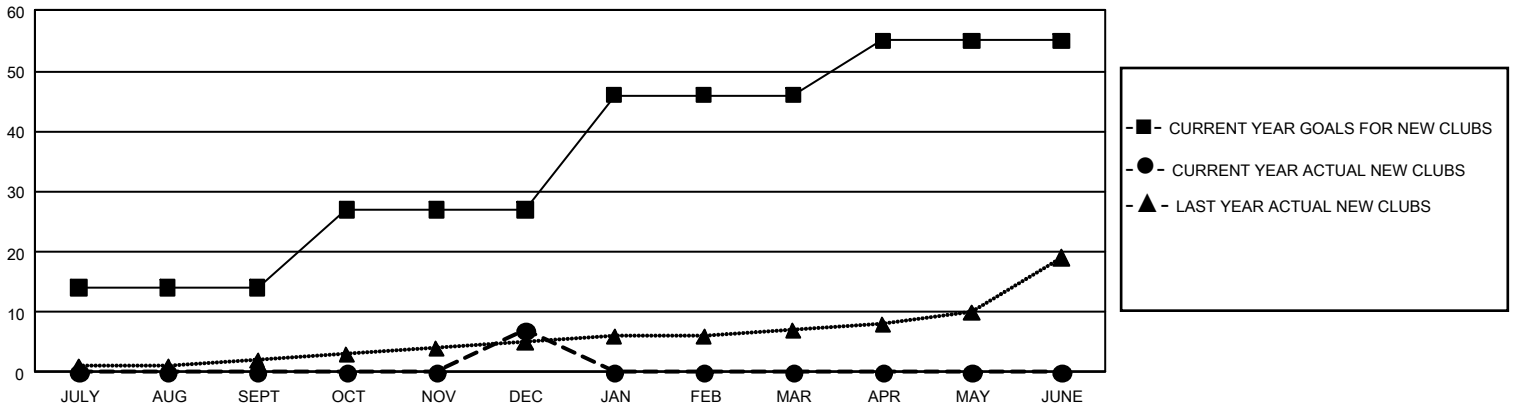
GMT: OPEN

REPORT DOES NOT INCLUDE CLUBS IN UNDISTRICTED AREAS.

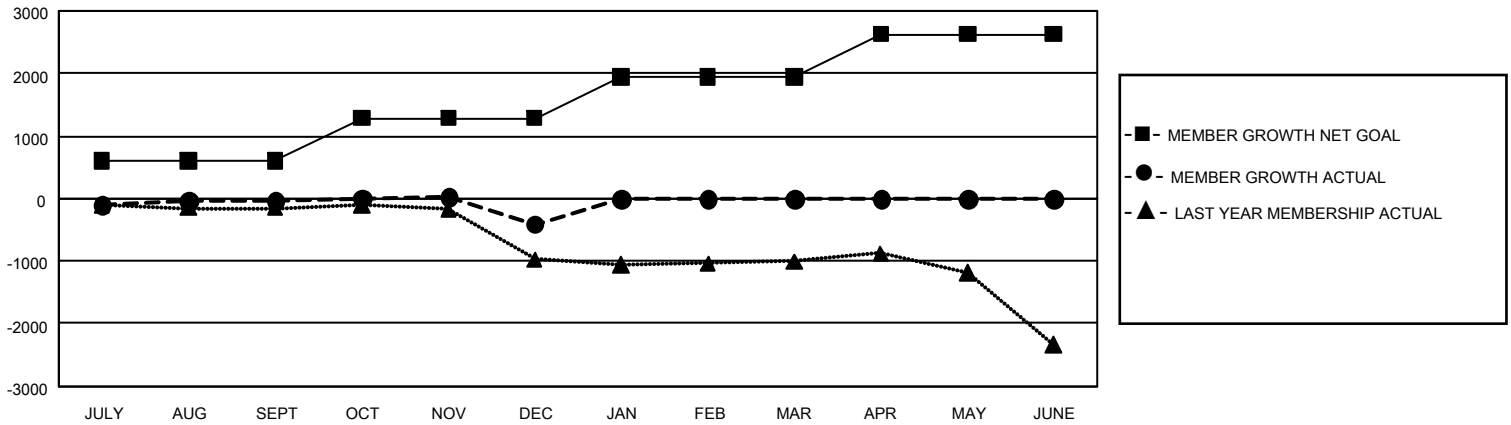
Clubs			
RESULTS FOR 2019-2020			
QUARTER	NEW CLUB GOAL	NEW CLUBS	DROPPED CLUBS
JULY/AUG/SEPT	42	0	25
OCT/NOV/DEC	39	7	15
JAN/FEB/MAR	57	0	0
APR/MAY/JUNE	27	0	0

Members			
RESULTS FOR 2019-2020			
QUARTER	MEMBER GROWTH NET GOAL	MEMBER GROWTH ACTUAL	DROPPED MEMBERS ACTUAL (including transfers)
JULY/AUG/SEPT	1,821	1,205	1,074
OCT/NOV/DEC	2,025	1,128	1,391
JAN/FEB/MAR	1,989	0	0
APR/MAY/JUNE	2,046	0	0

GOALS AND ACTUAL NEW CLUBS CUMULATIVE



GOALS AND ACTUAL MEMBERS CUMULATIVE



<p>DROPPED CLUBS: 40</p>	<p>601 CLUBS OF 1,315 ADDED 1 OR MORE NEW MEMBERS</p>	<p><u>GENDER DISTRIBUTION</u></p>	
		<p>MALE 20,556 (61.49%)</p> <p>FEMALE 12,872 (38.51%)</p>	
<p><u>DROPPED MEMBERS</u></p>		<p>TOTAL FAMILY UNIT MEMBERS 6,406</p>	
<p>DECEASED 216</p> <p>CLUB CANCELLED 277</p> <p>OTHER 1,967</p> <p>TOTAL 2,460</p>	<p>CLICK HERE FOR CUMULATIVE MEMBERSHIP DATA</p>	<p>FAMILY MEMBERS PAYING HALF DUES 3,332</p>	